



C L O S E T H E G A P

When you check for gaps in pulmonary vein isolation, **are you seeing them all?**

Acute data collection that includes both direct and indirect comparisons of the Advisor™ HD Grid Mapping Catheter, Sensor Enabled™ (SE), in standard pulmonary vein isolation (PVI) confirmation workflows suggests that the Advisor HD Grid Mapping Catheter, SE, can identify gaps that may be missed by other technologies.

CIRCULAR MAPPING CATHETERS¹

The incidence and location of gaps following PVI were tracked utilizing either a 10-pole circular mapping catheter (CMC10), a 20-pole circular mapping catheter (CMC20) or the Advisor™ HD Grid Mapping Catheter, SE.

ISOLATION WAS TRACKED
ACROSS 99 CASES

CMC10
n = 30

36.7%
OF PATIENTS
HAD GAPS¹

0.9
GAPS/
PATIENT¹

CMC20
n = 36

38.9%
OF PATIENTS
HAD GAPS¹

1.44
GAPS/
PATIENT¹

Advisor™ HD Grid
Mapping Catheter, SE
n = 33

81.8%
OF PATIENTS HAD GAPS¹

2.15 GAPS/PATIENT¹

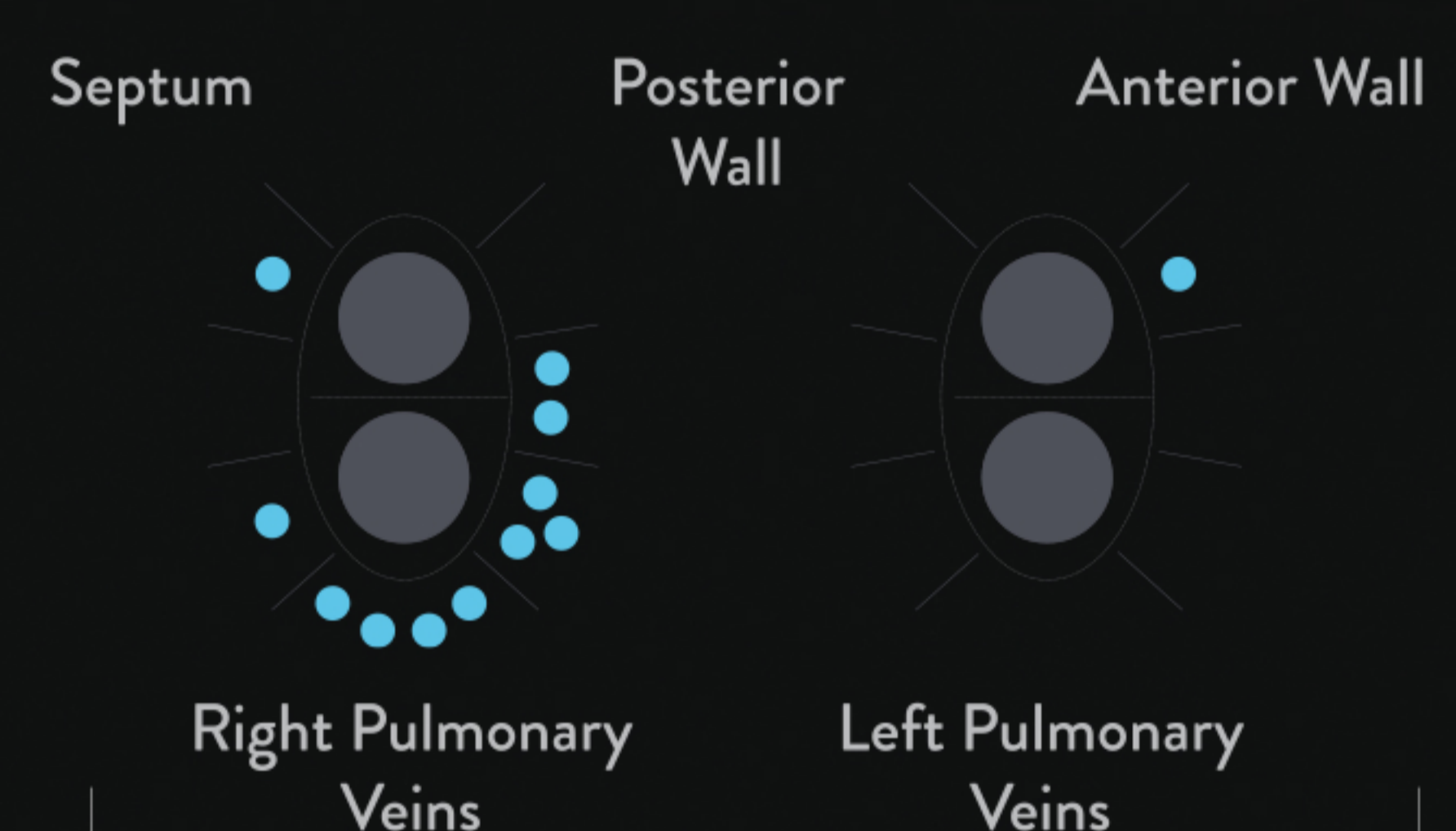
CRYOABLATION²

In a direct comparison, 18 patients received cryoablation with isolation confirmed by the Achieve[‡] Mapping Catheter. Isolation was then checked again with the Advisor HD Grid Mapping Catheter, SE, revealing:

4 patients with ≥ 1 gap missed by the Achieve[‡] Mapping Catheter



12 total gaps missed by the Achieve Mapping Catheter were identified by the Advisor HD Grid Mapping Catheter, SE²



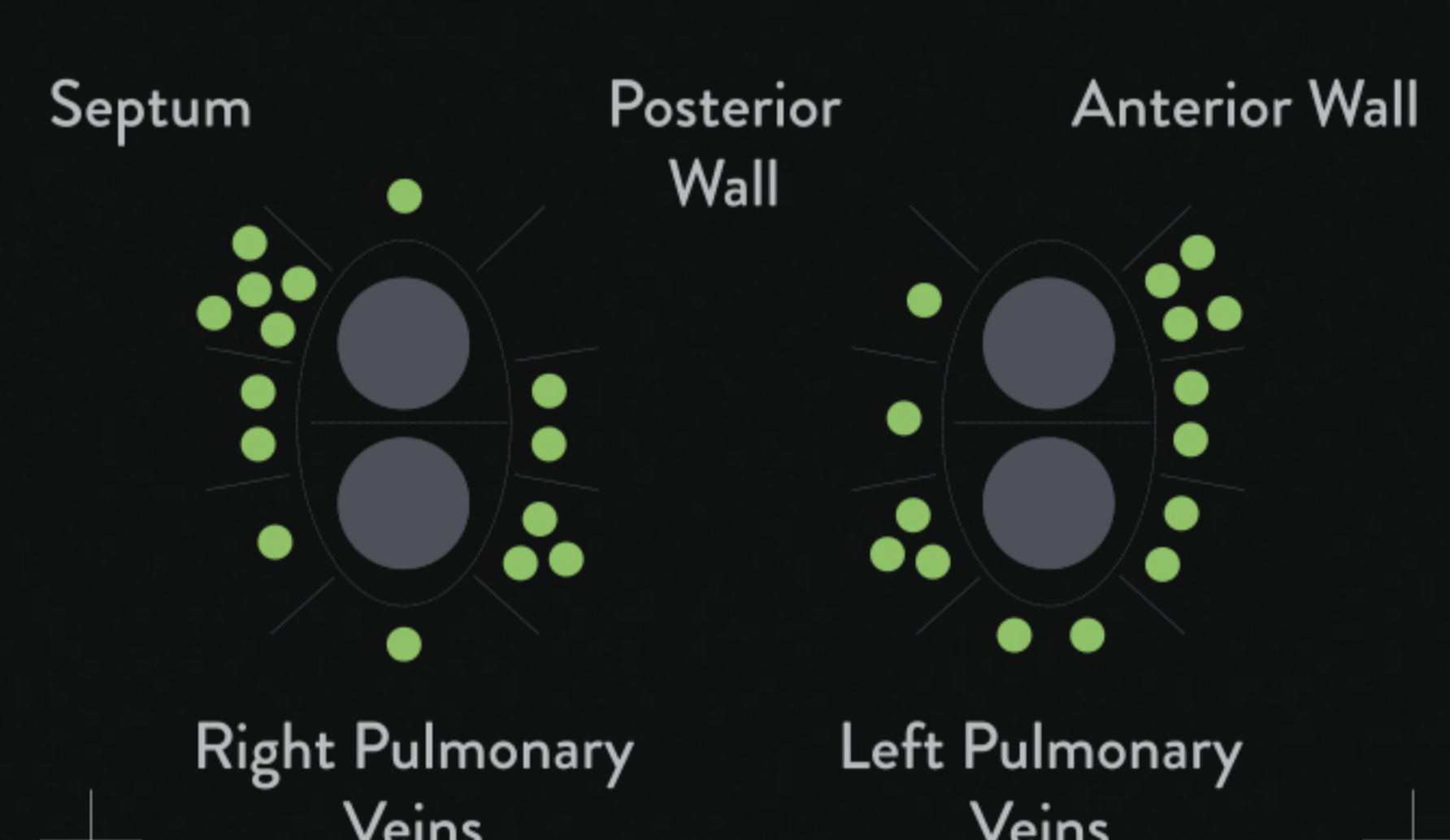
PACING ABLATION LINE³

In a direct comparison, 22 patients received ablation with isolation confirmed by pacing the ablation line. Isolation was then checked again with the Advisor HD Grid Mapping Catheter, SE, revealing:

15 patients with ≥ 1 gap missed by pacing³



30 total gaps missed by pacing were identified by the Advisor HD Grid Mapping Catheter, SE³



SEE THINGS DIFFERENTLY AT

[Cardiovascular.Abbott/ClosetheGap](https://www.Cardiovascular.Abbott/ClosetheGap)

1. Porterfield C, et al. Comparison of Gap Identification Using Three Technologies for Confirmation of Pulmonary Vein Isolation. Originally scheduled for poster presentation at EHRA 2020 Congress. Abbott. Data on File: MAT-2002108 v1.0.

2. Eldadah Z, et al. Incidence and Location of PVI Gaps Identified Post-Cryoballoon Ablation for Atrial Fibrillation. Originally scheduled for poster presentation at EHRA 2020 Congress. Abbott. Data on File: MAT-2002103 v1.0.

3. Giuggia M, et al. Incidence and Location of Residual Gaps Identified by a High-Density Grid-Style Mapping Catheter After PVI Is Confirmed by Pacing the Ablation Lines. Originally scheduled for poster presentation at EHRA 2020 Congress. Abbott. Data on File: MAT-2002112 v1.0.

Abbott
The Corporate Village, Da Vincilaan 11 Box F1, 1935 Zaventem, Belgium, +32 2 774 68 11
[Cardiovascular.Abbott](https://www.Cardiovascular.Abbott)

Brief Summary: Prior to using these devices, please review the Instructions for Use for a complete listing of indications, contraindications, warnings, precautions, potential adverse events and directions for use.

Illustrations are artist's representation only and should not be considered as an engineering drawings or photographs.

™ Indicates a trademark of the Abbott group of companies.

© 2020 Abbott. All Rights Reserved.

MAT-2012729 v1.0 | Item approved for EMEA audiences.