



## PROTESI INVERSA

# Tips & tricks per impiantare correttamente la componente omerale

**FEDERICO GRASSI**

*Università del Piemonte Orientale  
A.O.U. "Maggiore della Carità"*

**NOVARA**

Stabilità  
Mobilità



Fissazione



# Altezza Versione

Accorciamento

Instabilità

Allungamento

Rigidità

Frattura spina/acromion

Lesioni neurologiche

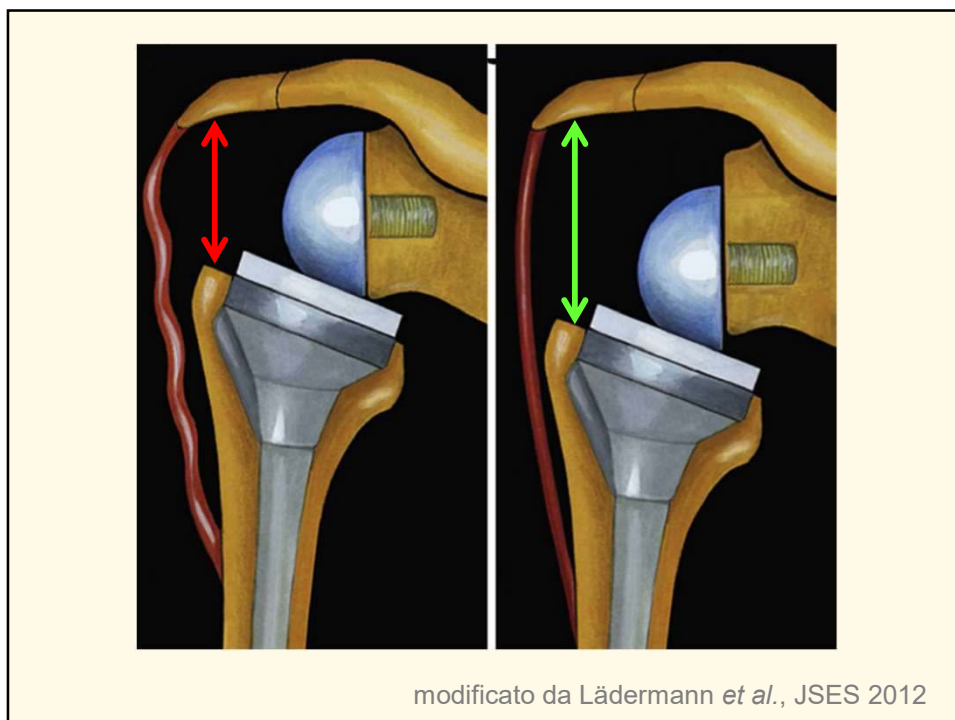
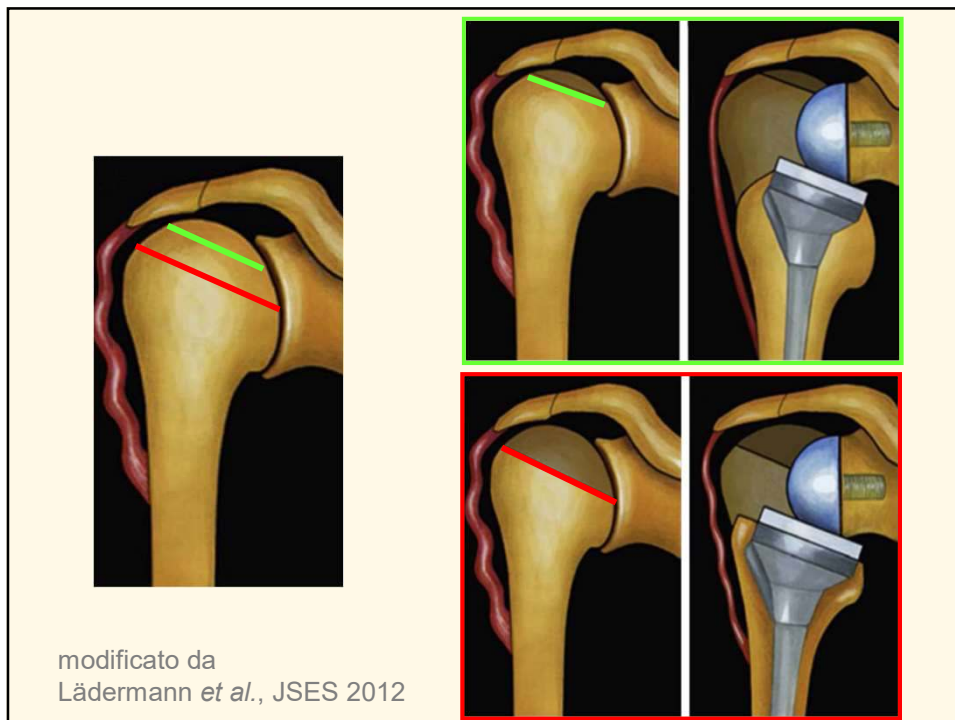
Vizio di versione

Instabilità

Conflitto

## Fattori che influenzano la lunghezza

- 1. Livello di resezione della testa omerale**
2. Posizione della glenosfera sul piano frontale
3. Misura della glenosfera
- 4. Altezza dell'inserto omerale**
- 5. Tipologia della componente omerale**





### Objective evaluation of lengthening in reverse shoulder arthroplasty.

*Lädemann et al., JSES 2009*

- Radiographic and clinical measurements on 58 RSA
- Average lengthening of the humerus 2 +/- 7 mm
- Arm was lengthened 23 +/- 12 mm
- Subjective intraoperative criteria to evaluate deltoid tension should be replaced by objective measures to prevent insufficient or excessive deltoid tension

### Influence of arm lengthening in reverse shoulder arthroplasty.

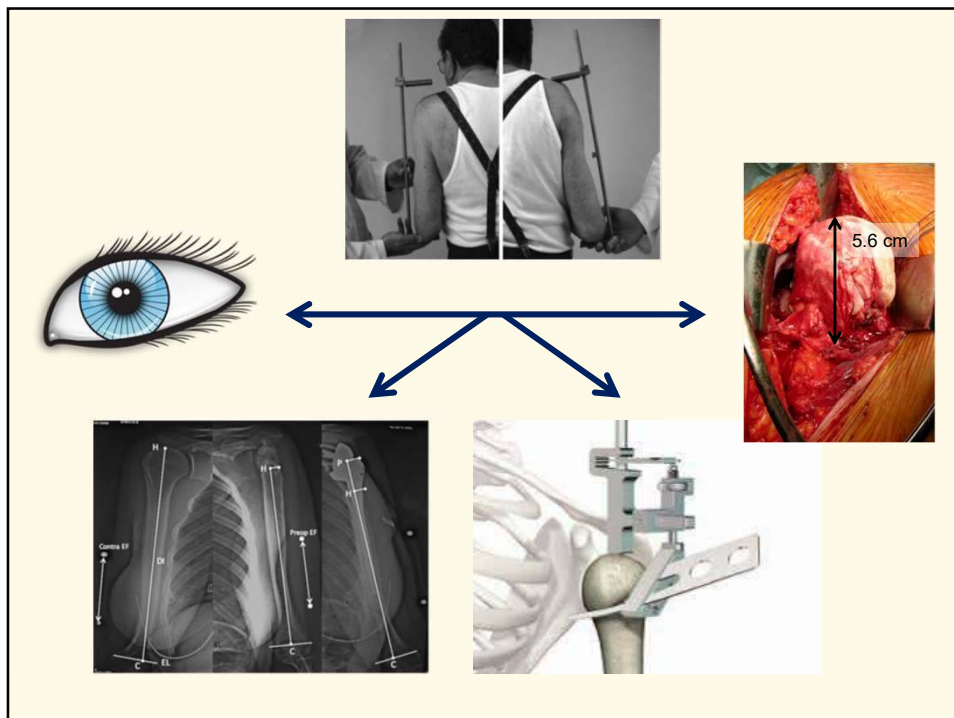
*Lädemann et al., JSES 2012*

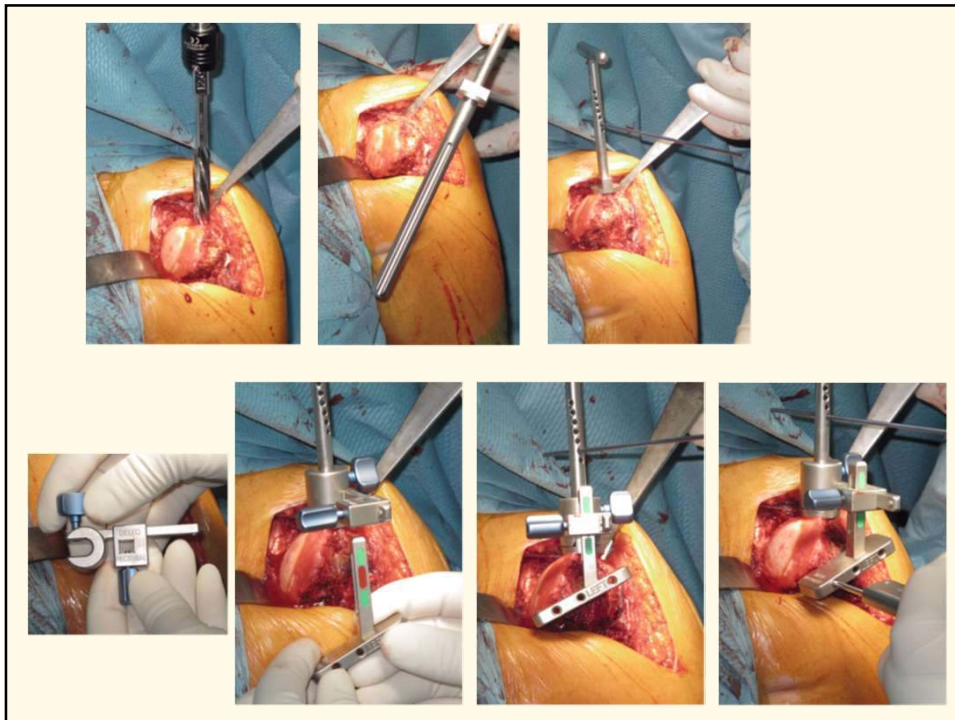
- 183 RSA
- Shortening of the arm led to a mean AAE value of 122°; lengthening of 0 and 1 cm, mean AAE of 140°; lengthening of greater than 1 cm to 2.5 cm, mean AAE of 144°; and lengthening of greater than 2.5 cm, mean AAE of 147°
- Shortening of the arm reduced active anterior elevation

### Does arm lengthening affect the functional outcome in onlay reverse shoulder arthroplasty?

*Werner et al., JSES 2017*

- 56 RSA
- Arm lengthening exceeding 2.5 cm was related to a decrease in anterior elevation
- Arm lengthening averaging 1 to 2.5 cm was found to be the best compromise on postoperative range of motion





TRANSDELTOIDEO

DELTOPETTORALE

